

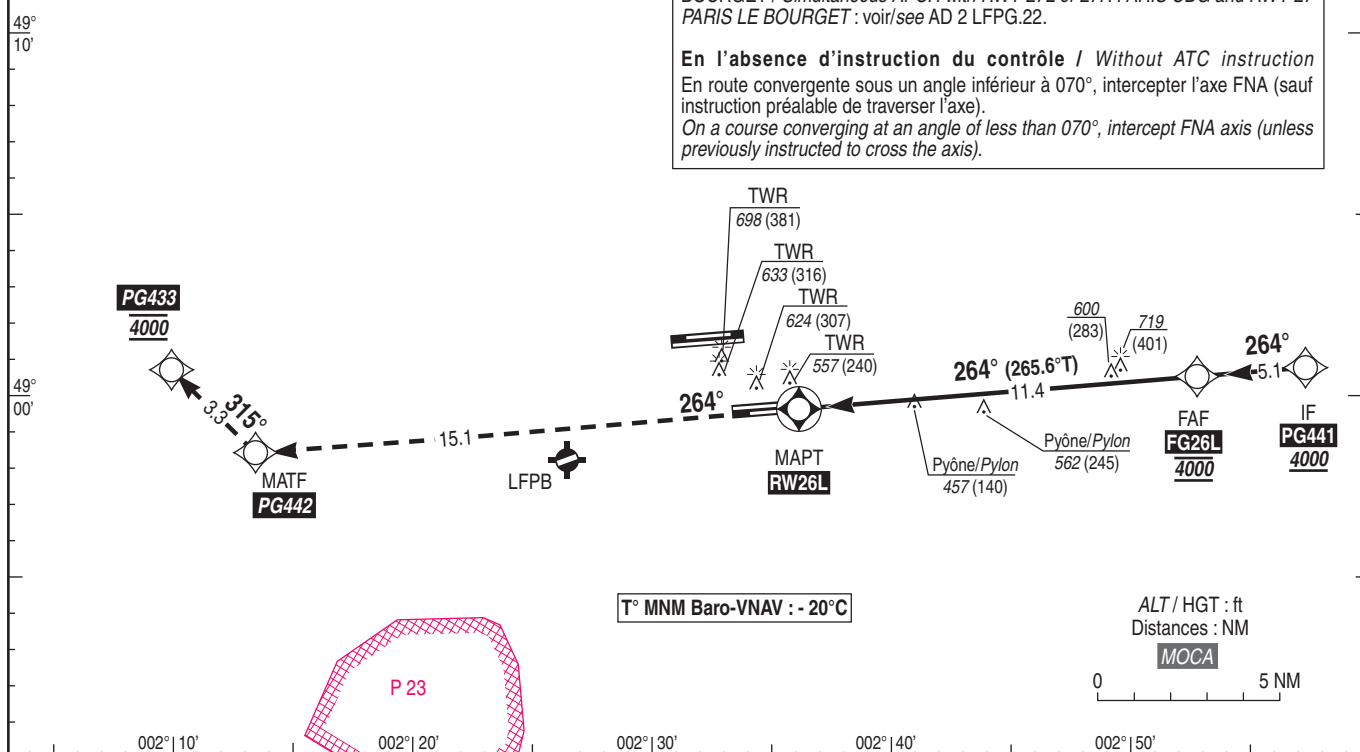
PARIS CHARLES DE GAULLE

ALT AD : 392, THR : 317 (12 hPa)

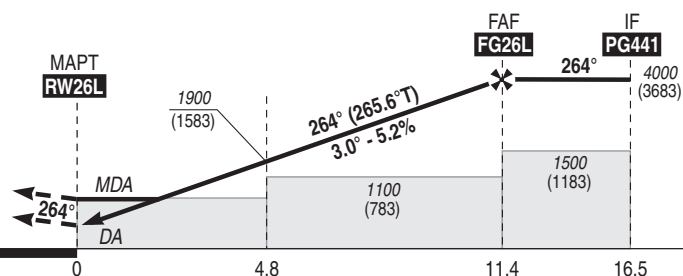
FNA **RNP** RWY 26L

<p>FREQ : Voir / See AD 2 LFPG COM 01</p>	<p>RNP APCH Procédures LNAV NON autorisées pendant les opérations simultanées. Utilisation du FD ou de l'AP fournissant un guidage de trajectoire RNP requis durant les opérations simultanées. Fonction du FMS permettant d'intercepter l'axe de la piste suite à un guidage radar. <i>LNAV procedures NOT authorized during simultaneous operations. Use of FD or AP providing RNP track guidance required during simultaneous operations. FMS function allowing the interception of the runway centerline after radar vectoring.</i></p>	<p>EGNOS CH 61919 E 26 A RDH : 57</p>	<p>VAR 1°E (20)</p>
--	---	--	--

On a course converging at an angle of less than 070°, intercept FNA axis (unless previously instructed to cross the axis).



THR ← (NM)



REF HGT : ALT THR

CAT	LPV			LNAV-VNAV			LNAV			MVL / Circling (1) 26L → 26R		DIST RW26L					
	DA (H)	RVR	OCH	DA (H)	RVR	OCH	MDA (H)	RVR	OCH	MDA (H)	VIS	NM	11	10	9	8	7
A	520 (200)	550	139	630 (310)	700	309	740 (420)	1200	414	1000 (680)	3000	ALT	3880	3560	3240	2920	2600
B			149	640 (320)	700	319	740 (420)	1200	414	1000 (680)	3000	(HGT)	(3563)	(3243)	(2923)	(2603)	(2283)
C			172	660 (340)	800	340	740 (420)	1200	414	1100 (780)	3700	6	5	4	3	2	
D			183	690 (370)	1000	367	750 (430)	1300	429	1100 (780)	4300	2280	1970	1650	1330	1010	
DL			189	-										(1963)	(1653)	(1333)	(1013)

FAF - THR	11.4 NM	70 kt 9 min 46	85 kt 8 min 02	100 kt 6 min 50	115 kt 5 min 56	130 kt 5 min 15	160 kt 4 min 16	185 kt 3 min 42
VSP (ft/min)		370	450	530	610	685	845	980